

ConSeal

Protect and renovate buildings professionally

Product range 2025



Protect and preserve values with CONSEAL!



ConSeal Spezialbaustoffe GmbH offers building materials for waterproofing, renovation and for the strengthening of buildings.

The foundation for the brand ConSeal laid the company founder Dipl.-Bauing. (FH) Andreas Ullrich in 2011. Today the Company distribute successfully building materials for professional and contemporary building protection throughout Germany and beyond.

Application areas

The complexity of building waterproofing, joint sealing, basement renovation and plinth renovation require different system solutions depending on local conditions and findings from diagnostics.

Other focal points of our products for building renovation and new construction are classic concrete renovation, mineral floor coatings as well as tile laying and roof coatings.

Quality

With our products, we offer competent and innovative solutions for complex requirements in new construction and renovation.

Professional and high-quality products facilitate the work and increase the quality of the result.



ConSeal

Protect and renovate buildings professionally

ConSeal Spezialbaustoffe GmbH
www.conseal.eu

Building waterproofing and restoration	Page 3
Sealing mortar	3
Mineral waterproofing slurry (MDS)	3
Reactive mineral seals - flexible (flexible MDS)	3
Polymer modified bitumenous coating (PMBC)	3
Fast setting hybrid waterproofing	3
Self-adhesive waterproofing sheet	4
Joint sealing tape	4
Sealing accessories	4
Waterproofing protection and backfill protection	4
Horizontal barrier	4
Injection resin	4
Restoration plaster system	5
Adhesive- & reinforcement mortar for climatic- and calcium silicate panels	5
Repair and protection of concrete and facades	Page 5
Rapid cement, assembly mortar and stuffing mortar	5
Repair mortar	5
Facade impregnation / hydrophobic impregnation	5
Crack resin turbo	5
Floor coating, sealing, surface improvement	Page 5
Mineral, high-strength, moisture-insensitive floor coating	5
Sealing / special applications	6
Tiling supplies	Page 6
Tile composite waterproofing	6
Sealing tapes, corners & collars	6
Tile adhesive	6
Floor leveling compound	7
Tile building boards & angle elements (pipe boxes)	7
Primers & additives	Page 7
Primers	7
Primers & additives for bitumen and hybrid waterproofing systems	7
Attachment	Page 8
Collection - joint sealing tapes	8
Professional series: CS 580 Flex-Dichtband <i>flex sealing tape</i>	8
Waterproofing application - principle illustration - new construction	9
Waterproofing application - principle illustration - renovation	10
System components for external, internal & cross-section sealing	11
Detailed drawings basement renovation	12
General conditions of sale and delivery	14

Building waterproofing and restoration

Sealing mortar

CS 510 Hohlkehlspermmörtel HKS <i>fillet barrier mortar</i>	Item no.	Packing	Rule*	PU	Unit	Pi/Pal.
Fast-setting sealing filler for the rounding of inside corners / for fillet formation, as leveling and as pre-sealing under mineral waterproofing and bituminous waterproofing systems; cement-bound; with crystalline water binding; approx. 1.8 kg/dm ³ , approx. 3 kg/m fillet (at 4-5 cm radius)	1510025	bag		25	kg	42

Mineral waterproofing slurry (MDS)

CS 551 Dichtschlämme flexibel 1K <i>1-component flexible sealing slurry</i>	Item no.	Packing	Rule*	PU	Unit	Pi/Pal.
Cementitious, flexible one-component sealing slurry, for building construction and civil engineering, at 2 mm min. 3 kg/m ²	1551020	bag	LA/PA	20	kg	42
CS 554 Sulfatschlämme <i>sulfate slurry</i>	Item no.	Packing	Rule*	PU	Unit	Pi/Pal.
Mineral, sulfate-resistant sealing slurry, rigid, grey, for new building and restoration, approx. 1.7 kg/mm per m ² ; at 2 mm min. 3.4 kg/m ² ; inside negative min. 7 kg/m ²	1554020	bag		20	kg	48

Reactive mineral seals – flexible (flexible MDS)

CS 557 Flexschlämme RD 2K <i>rapid 2-component hybrid rapid flexible slurry</i>	Item no.	Packing	Rule*	PU	Unit	Pi/Pal.
Universal, fast setting, reactive, mineral, flexible 2-component waterproofing slurry; Consumption: at 2 mm min. 3.6 kg/m ²	1557024	combined container		24	kg	18
	1557030	bag + canister		30	kg	20

Polymer modified bitumenous coating (PMBC)

CS 530 Dickbeschichtung 2K Super <i>2-component thick coating super</i>	Item no.	Packing	Rule*	VE	Unit	Pi/Pal.
Polystyrene-containing, high dry residue, quickly rainproof, highly flexible, sprayable (machine-dependent), according to DIN 18533 for W1-E, W2.1-E, W3-E and W4-E, also against pressurized water, radon-proof, for connections to water-impermeable concrete components, with 3 mm dry layer min. 3.53 l/m ² ; with 4 mm min. 4.71 l/m ²	1530030	container	PA	30	L	18
CS 536 Dickbeschichtung 1K Poly <i>1-component thick coating poly</i>	Item no.	Packing	Rule*	PU	Unit	Pi/Pal.
Ready-to-use, polystyrene-containing, 1-component, high dry residue, flexible, can also be sprayed; according to DIN 18533 for W1-E, W2.1-E, W3-E and W4-E; also against pressurized water and connections to water-impermeable concrete components; for 3 mm dry layer min. 3.49 l/m ² ; for 4 mm min. 4.65 l/m ²	1536030	container	NP	30	L	18

Fast setting hybrid waterproofing (PMBC & FPD unites in one)

CS 540 FastSeal 2K Hybrid <i>2-component FastSeal hybrid</i>	Item no.	Packing	Rule*	PU	Unit	Pi/Pal.
Muti purpose applicable, flexible, reactive and fast curing 2-component hybrid waterproofing, combines the good properties of a PMBC- and FPD-seal in one product, consumption: at 2 mm min. 2.5 kg/m ² , 3 mm min. 3.8 kg/m ² , 4 mm min. 5.2 kg/m ²	1540125	combined container	NP	25	kg	18

Now also available with divided components!

Waterproofing of the new generation



CS 540 FastSeal 2K Hybrid is a versatile, highly flexible, reactive and fast curing 2-component hybrid sealant for building protection, combining the benefits of a PMBC waterproofing with the benefits of a FPD waterproofing in one product.

- Multifunctional fast hybrid waterproofing
- Rainproof after approx. 2.5 h and backfillable after approx. 24 h
- Radon-tight, UV-resistant, crack-bridging
- Resistant to frost and de-icing salt
- Can be painted and plastered over, sprayed on
- PMBC and FPD united in one!

Our recommendation for this product:

CS 510 Hohlkehlspermmörtel HKS
fillet barrier mortar

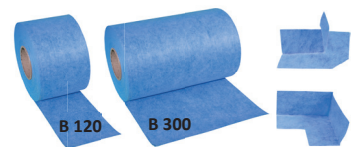


- Substrate preparation
- Equalise, pre-sealing
- For the rounding of inside corners
- Fast recoatable

CS 500 Grundierung Spezial
special primer



CS 580 Flex-Dichtband
flex sealing tape



Self-adhesive waterproofing sheet

CS 571 KSK-Bahn Vulk. SAM with vulcanisation strip	Item no.	Packing	Rule*	PU	Unit	Pi/Pal.
Cold-applied self-adhesive bituminous sealing membrane (SAM) with 25 mm vulcanisation strip, for -5°C to +30°C, d=1.5 mm, tear-resistant, crack-bridging, immediately waterproof, with grid imprint, 1 m wide, for W1-E and W4-E according to DIN 18533	1571015	roll/ carton	PA	15	m ²	15

CS 577 Alu-KSK-Dampfsperrbahn alu SAM water vapour barrier	Item no.	Packing	Rule*	PU	Unit	Pi/Pal.
Cold self-adhesive bitumen membrane on aluminium carrier foil, e.g. as a vapour barrier under screeds to DIN EN 13970, Sd value > 1500 m, d = 0.8 mm, roll 1 m x 15 m	1577015	roll/ carton	NP	15	m ²	24

Joint sealing tape

(Pictures on page 8)

CS 580 Flex-Dichtband flex sealing tape	Item no.	Packing	Rule*	PU	Unit	Pi/Pal.
Working, movement and element butt joint tape, as well as Sealing tape for inside corners and reinforcing insert; for 2-component PMBCs, flex sealing slurries, hybrid sealing, liquid plastic, etc.; transversely elastic and bitumen compatible; CS 580 B120 can be used especially as a cove sealing tape	width = 120 mm width = 250 mm width = 300 mm width = 500 mm External corner 120 Internal corner 120 SK 30-250	1580120 1580250 1580300 1580500 1580800 1580900 1580725	roll roll roll roll carton carton roll		50 m 50 m 50 m 50 m 25 pcs. 25 pcs. 25 m	

CS 581 Dichtband PVC sealing tape PVC B240 / B400	Item no.	Packing	Rule*	PU	Unit	Pi/Pal.
Expansion joint sealing tape made of soft PVC with a fleece edge, compatible with bitumen, weldable, UV resistant	width = 240 mm width = 400 mm	1581230 1581430	roll roll		30 m 30 m	

CS 582 Endstückband PVC end piece tape PVC B240 E	Item no.	Packing	Rule*	PU	Unit	Pi/Pal.
End piece-expansion joint sealing tape made of soft PVC, at the ends with circumferential fleece edge, bitumen compatible, weldable, UV-resistant	width = 240 mm	1582206	roll		6 m	

CS 583 Dichtband G sealing tape G	Item no.	Packing	Rule*	PU	Unit	Pi/Pal.
Expansion joint sealing tape made of synthetic rubber with fabric edge, bitumen compatible	width = 240 mm width = 300 mm	1583230 1583330	roll roll		30 m 30 m	

CS 584 Endstückband G end piece tape G	Item no.	Packing	Rule*	PU	Unit	Pi/Pal.
End piece expansion joint sealing tape made of synthetic rubber, with circumferential fabric edge at the ends, bitumen-compatible	width = 240 mm width = 300 mm	1584206 1584306	roll roll		6 m 6 m	

CS 589 Butyl-Kautschuk-Dichtband VFB butyl rubber sealing tape VFB	Item no.	Packing	Rule*	PU	Unit	Pi/Pal.
Elastic, universal, self-adhesive sealing tape, for joints, transitions and bridging, can be plastered over	width = 100 mm width = 250 mm	1589125 1589510	roll roll		25 m 10 m	

Sealing accessories


CS 998 Armierungsgewebe reinforcement mesh	Item no.	Packing	Rule*	PU	Unit	Pi/Pal.
Rot-proof, alkali-resistant, mesh 4x4 mm, as reinforcing insert in PMBCs and the like	1998050	roll		50	m	33

Waterproofing protection and backfill protection

CS 933 System-Dränschutzbahn 3-lagig three-coat system drainage protection membrane	Item no.	Packing	Rule*	PU	Unit	Pi/Pal.
3-layer protective dimpled membrane with drainage and decoupling function (with fleece+foil), on vertical bituminous and mineral waterproofings	1933230	roll	NP	30	m ²	6

CS 930 Abschlussprofil closing profile	Item no.	Packing	Rule*	PU	Unit	Pi/Pal.
Bracket and end for CS 933	1930002	rod	NB	2	m	

Horizontal barrier

CS 564 Injektionscreme injection cream	certified by WTA	Item no.	Packing	Rule*	PU	Unit	Pi/Pal.
Gel-like injection agent against rising damp in masonry, up to 95 % DfG, Active ingredient content 80 %, consumption min. 1.0-1.5 l/m ² wall cross-sectional area		1564014 1564006	bucket sausage		14 600 ml	L pcs.	18/Pal. 12 per carton

Injection resin

CS 455 PU-Injektionsharz ST PU injection resin ST	Item no.	Packing	Rule*	PU	Unit	Pi/Pal.
Elastic water-reactive 2-component PU injection resin for crack sealing, permanent crack closure for dry and water-bearing cracks in masonry and concrete	1455020	canister A+B	L7	20	kg	

CS 467 Pumpenreiniger pump cleaner Cleaner for PU injection technology	Item no.	Packing	Rule*	PU	Unit	Pi/Pal.
	1467005	canister	L7	5	kg	

Restoration plaster system

CS 591 Vorspritzmörtel pre spray mortar Mineral, sulphate-resistant; under SP system approx. 4 kg/m ² at 50 % coverage, but on water-proofing slurry approx. 8 kg/m ² fully covering, fresh in fresh in an additional layer of sealing slurry	Item no.	Packing	Rule*	PU	Unit	Pi/Pal.
	1591030	bag	NP	30	kg	35
CS 594 Sanierputz weiß restoration plaster white Natural white restoration render with high porosity and water vapour permeability, reduced absorbency, water-repellent, salt-resistant, min. 9.75 kg/cm per m ²	Item no.	Packing	Rule*	PU	Unit	Pi/Pal.
	1594030	bag	NP	30	kg	35

Adhesive- & reinforcement mortar for climatic- and calcium silicate panels

CS 260 Klebspachtel adhesive- and reinforcement mortar White, tempered, highly water vapour permeable Adhesive- & reinforcement mortar; approx. 1.3 kg/mm per m ²	Item no.	Packing	Rule*	PU	Unit	Pi/Pal.
	1260025	bag	PA	25	kg	42

Repair and protection of concrete and facades

Rapid cement, assembly mortar and stuffing mortar

CS 601 Schnellzement quick setting cement Fast-setting (workable in approx. 5-7 minutes) cement for installation work, for sealing and accelerating, loadable after approx. 15 minutes (at 20 °C), approx. 1 kg/dm ³	Item no.	Packing	Rule*	PU	Unit	Pi/Pal.
	1601015	bucket		15	kg	44

Repair mortar

CS 621 Reparaturmörtel universal repair mortar universal Universal, fibre-reinforced, fast-setting, high-strength mortar and filler, also for overhead application, for layer thicknesses of 1 -100 mm, approx. 1.65 kg/dm ³	Item no.	Packing	Rule*	PU	Unit	Pi/Pal.
	1621025	bag		25	kg	40
CS 624 WD-Spachtel WD levelling compound Fast-setting, fine, cementitious concrete filler for levelling and repairing wall and ceiling surfaces made of concrete, lime or cement plaster and masonry, approx. 1.5 kg/dm ³	Item no.	Packing	Rule*	PU	Unit	Pi/Pal.
	1624025	bag	PA, LA	25	kg	42
CS 619 Korrosionsschutz und Haftbrücke M corrosion protection and adhesion bridge M Mineral corrosion protection and bonding bridge in one; for CS 621 during installation according to EN 1504-9	Item no.	Packing	Rule*	PU	Unit	Pi/Pal.
	1619020	container		20	kg	

Facade impregnation / hydrophobic impregnation

CS 643 Imprägniercreme impregnation cream Facade hydrophobing cream for absorbent mineral substrates such as brick, concrete, mortar, aerated concrete, clinker, KS-stone, natural stone and plaster; approx. 0.15 - 0.4 l/m ² depending on absorbency	Item no.	Packing	Rule*	PU	Unit	Pi/Pal.
	1643015	bucket		15,50	L	18

Crack resin turbo

CS 449 Rissharz Easy-Fix 2K 2-component crack resin Easy-Fix Very fast-setting and easy-to-use casting resin for closing joints and cracks in mineral screeds etc.; also for bonding metal rails; per carton: 5 sets, each containing 600 ml (300 ml bottle-A + 300 ml bottle-B) and 40 Screed-clip	Item no.	Packing	Rule*	PU	Unit	Pi/Pal.
	1449006	carton (5 bottle sets)	NP	5 sets	set	5/cart.

Floor coating, sealing, surface improvement

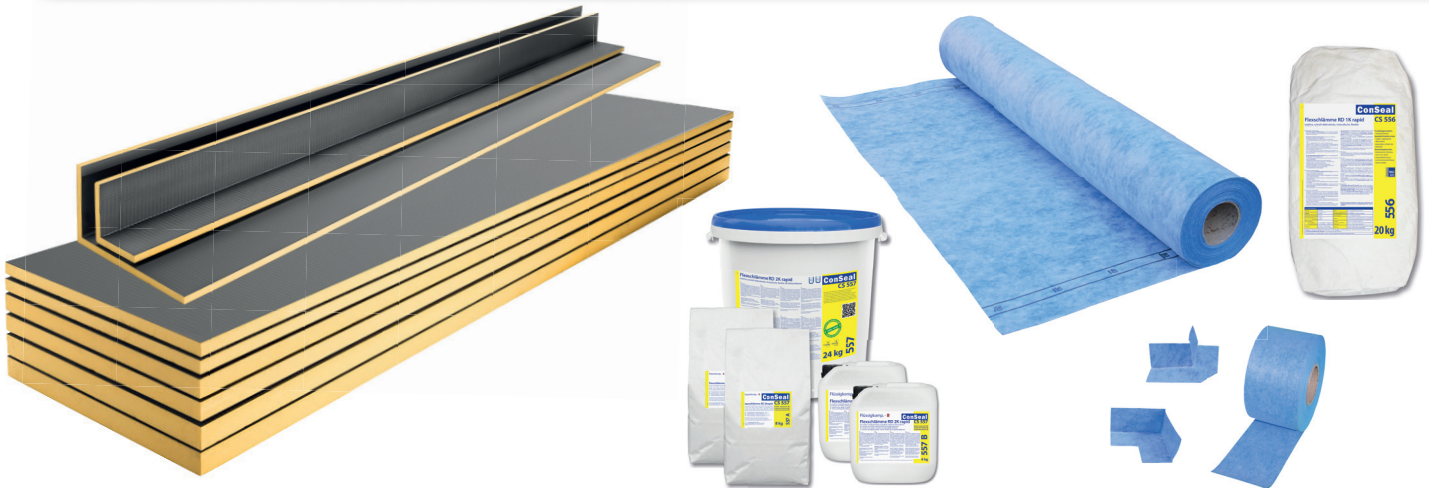
Mineral, high-strength, moisture-insensitive floor coating

CS 493 Bodenverlaufsmasse H self leveling overlayment H High-strength, universal, fast-setting, self-levelling, mineral levelling compound, with smooth and very abrasion-resistant surface; very high & very fast strength development; for interior and exterior; for thicknesses of 3-40 mm; consumption: approx. 1.76 kg/mm per m ²	Item no.	Packing	Rule*	PU	Unit	Pi/Pal.
	1493020	bag	PA, L10	20	kg	48

Sealing / special applications

CS 437 Floortop SIK <i>floortop SIK</i>	Item no.	Packing	Rule*	PU	Unit	Pi/Pal.
Water-based transparent surface finish for industrial floors etc., improves abrasion resistance, appearance, chemical resistance and reduces absorbency of cementitious floors, based on silicate polymers, good penetration capacity; consumption approx. 0.1-0.2 kg/m ²	1437025	canister		25	kg	16
CS 417 EP Siegel WPM <i>epoxy sealer WPM</i>	Item no.	Packing		PU	Unit	Pi/Pal.
Universal, coloured, water-based 2-component epoxy resin sealer (RAL 7032), silk matt, high opacity	1417010	container		10	kg	42

Tiling supplies



Tile composite waterproofing

CS 990 Abdichtbahn <i>waterproofing membrane</i>	Item no.	Packing	Rule*	PU	Unit	Pi/Pal.
Crack-bridging waterproofing membrane under tiles, waterproof, decoupling, no drying times, water vapour retardant, fast working sequence, AbP range A and C	1990030	roll		30	m	
CS 991 Dicht- & Entkopplungsbahn <i>sealing & decoupling membrane</i>	Item no.	Packing	Rule*	PU	Unit	Pi/Pal.
Crack-bridging sealing and decoupling membrane under tiles and slabs	1991015	roll		15	m	
CS 170 Dichtfolie <i>liquid sealing film</i>	Item no.	Packing	Rule*	PU	Unit	Pi/Pal.
Highly elastic, brushable, waterproof, dispersion-based composite sealant for use under ceramic tiling indoors, for use in exposure class A0, grey or blue, Consumption: approx. 1.2 kg/m ² for 0.5 mm dry film thickness	Grey 1170020 Blue 1170120	bucket		20	kg	32
CS 556 Flexschlämme RD 1K rapid <i>1-component flex slurry RD rapid</i>	Item no.	Packing	Rule*	PU	Unit	pi/pal.
Particularly fast, reactively setting, mineral, flexible 1-component waterproofing slurry, as a tile-composite waterproofing, with AbP, Consumption: at 2 mm min. 3 kg/m ²	1556020	bag	PA	20	kg	42

Sealing tapes, corners & collars

CS 970 - CS 979	Item no.	Packing	Rule*	PU	Unit	Pi/Pal.
CS 970 Dichtband 120 Gewebe <i>sealing tape 120, fabric edge</i> (Object sealing tape)	1970050	roll		50	m	120
CS 971 Wandmanschette 120 Gewebe <i>wall collar 120, fabric edge</i>	1971001	carton		50	pcs.	
CS 972 Außenecke Gewebe <i>external corner, fabric edge</i>	1972001	carton		25	pcs.	
CS 973 Innenecke Gewebe <i>internal corner, fabric edge</i>	1973001	carton		25	pcs.	
CS 974 Dichtband 120 Vlies <i>sealing tape 120, fleece edge</i>	1974050	roll		50	m	120
CS 979 Bodenmanschette 350 Vlies <i>floor collar 120, fleece edge</i>	1979001	carton		10	pcs.	
CS 994 Dichtband, Wandmanschette, Außen- und Innenecke DE <i>sealing tape, wall collar, external- and internal corner DE</i>	Item no.	Packing	Rule*	PU	Unit	Pi/Car.
CS 994 Dichtband DE <i>sealing tape DE</i>	for CS 990, CS 991					
CS 994 Wandmanschette DE <i>wall collar DE</i>	for CS 990, CS 991					
CS 994 Außenecke DE <i>external corner DE</i>	for CS 990, CS 991					
CS 994 Innenecke DE <i>internal corner DE</i>	for CS 990, CS 991					
	width = 120 mm					
	with stretch zone					
	1994050	roll		50	m	
	1994101	carton		1	pcs.	25
	1994201	carton		1	pcs.	25
	1994301	carton		1	pcs.	25

Tile adhesive

CS 106 Flex-Fliesenkleber <i>flex tile adhesive</i>	Item no.	Packing	Rule*	PU	Unit	Pi/Pal.
Universal, flexible thin-bed tile adhesive mortar C2 TE, S1	1106025	bag	NP	25	kg	42

CS 113 Fließbettkleber <i>fluid-bed adhesive</i>	Item no.	Packing	Rule*	PU	Unit	Pi/Pal.
Flexible, crystalline-setting tile adhesive C2 F for void-free floor laying	1113025	bag	NP	25	kg	42

Floor leveling compound

CS 482 Nivellierspachtel 20 A <i>levelling putty 20 A</i>	Item no.	Packing	Rule*	PU	Unit	Pi/Pal.
Self-levelling levelling compound for floors up to 20 mm thick; interior and exterior use	1482025	bag	NP,LA	25	kg	42

Tile building boards & angle elements (pipe boxes)

Fliesen-Bauplatten <i>tile building boards</i>	Item no.	Packing	Rule*	PU	Unit	Pi/Pal.
Particularly lightweight tile building boards; ideal for use in bathrooms and wet rooms in renovation and new construction; as cladding, surface levelling and design element; with special easy-to-cut, fabric-coated surface; are waterproof, thermal insulating and rot resistant.	1.300 x 600 x 4 mm	5804000	board	NP	0,78 m ²	140
	1.300 x 600 x 6 mm	5806000	board	NP	0,78 m ²	140
	1.300 x 600 x 10 mm	5810100	board	NP	0,78 m ²	100
	2.600 x 600 x 10 mm	5810200	board	NP	1,56 m ²	100
	2.600 x 600 x 20 mm	5812000	board	NP	1,56 m ²	50
	2.600 x 600 x 30 mm	5813000	board	NP	1,56 m ²	36
	2.600 x 600 x 40 mm	5814000	board	NP	1,56 m ²	36
	2.600 x 600 x 50 mm	5815000	board	NP	1,56 m ²	26
Winkelelemente <i>angle elements</i>	Item no.	Packing	Rule*	PU	Unit	Pi/Pal.
Lightweight, waterproof, heat-insulating and non-rotting building elements for the tiler, for renovation and new construction; as cladding, pipe boxes and design elements	150 x 150 x 20	5821000	angle	NP	2,60 m	60
	200 x 200 x 20	5822000	angle	NP	2,60 m	40
	300 x 300 x 20	5823000	angle	NP	2,60 m	40
	400 x 200 x 20	5824000	angle	NP	2,60 m	40

Primers & additives

Primers

CS 902 Tiefengrund <i>deep-penetrating primer</i>	Item no.	Packing	Rule*	PU	Unit	Pi/Pal.
Solvent-free fine dispersion for priming and consolidating all interior and exterior mineral substrates, walls and floors, e.g. under cement-based flexible waterproofing slurries, tile adhesives, levelling compounds, etc.; approx. 0.15-0.25 l/m ² depending on the absorbency of the substrate	1902005	canister		5	L	96
	1902200	barrel		200	L	
CS 904 Haft- und Kontaktgrund <i>adhesion and contact primer</i>	Item no.	Packing	Rule*	PU	Unit	Pi/Pal.
Dispersion primer as bonding bridge on all smooth, dense and non-absorbent substrates, drying time approx. 1 h, for interior use, consumption approx. 50 -150 g/m ² , (up to 250 g/m ²)	1904004	bucket		4	kg	
	1904010	bucket		10	kg	
CS 905 Unigrund <i>universal primer</i>	Item no.	Packing	Rule*	PU	Unit	Pi/Pal.
Fast acrylic primer, approx. 2-3 h, max. dilutable 1:3, approx. 0.03-0.1 l/m ² depending on substrate	1905010	container		10	kg	40

Primers & additives for bitumen and hybrid waterproofing systems

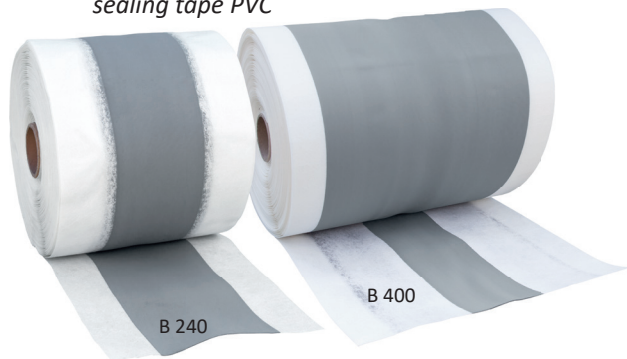
CS 500 Grundierung Spezial <i>special primer</i>	Item no.	Packing	Rule*	PU	Unit	Pi/Pal.
Very fast (15-30 min.), ready for use, for CS 540 and others, approx. 0.1-0.2 l/m ²	1500010	canister		10	L	60
CS 501 Bitumen Voranstrich <i>bitumen primer</i>	Item no.	Packing	Rule*	PU	Unit	Pi/Pal.
Ready-to-use primer for PMBCs, solvent-free, approx. 0.1-0.2 l/m ²	1501010	canister		10	L	60
CS 502 Bitumen Voranstrich Konzentrat <i>bitumen primer concentrate</i>	Item no.	Packing	Rule*	PU	Unit	Pi/Pal.
For PMBC's diluted 1:10 (approx. 0.03 l/m ²), solvent-free, also as a protective coating	1502005	bucket		5	L	80
CS 503 Grundierung KSK-Bahn <i>primer for SAM-waterproofing membranes</i>	Item no.	Packing	Rule*	PU	Unit	Pi/Pal.
Ready-to-use primer for SAM, approx. 0.1-0.15 l/m ² , solvent-free	1503010	bucket		10	L	44
CS 504 Haftgrundierung KSK <i>adhesion primer for SAM</i>	Item no.	Packing	Rule*	PU	Unit	Pi/Pal.
Ready-to-use fast primer for SAM, approx. 0.1-0.15 l/m ² , extremely inherently tacky, down to -5°C	1504010	bucket		10	L	44
CS 505 BitumenBahnen-Voranstrich <i>bitumen sheeting primer</i>	Item no.	Packing	Rule*	PU	Unit	Pi/Pal.
Ready to use, fast drying approx. 15 min., for bitumen, roofing and welding membranes	1505025	canister	NP	25	L	24
CS 506 Verzögerer für Hybridabdichtung <i>retarder for hybrid waterproofing</i>	Item no.	Packing	Rule*	PU	Unit	Pi/Pal.
Solvent-free, liquid setting retarder for CS 540; Dosage: 1% by mass (0.25 kg/container)	1506001	carton (6 bottles)	NK	6 x 1	kg	

*) NP = only pallet delivery; PA = only pallet-wise (single order on request / >5 days); NB = only bundle-wise and in connection with 1 pallet. NK = only by carton; M4 = minimum order quantity 4; LA = availability on request; L10 = delivery time approx. 10 working days

For detailed information, further articles and our terms of sale and delivery, please visit www.conseal.de! Always follow the detailed information and instructions in the latest technical data sheets at www.conseal.de and the relevant regulations. The General Terms and Conditions of Sale and Delivery of ConSeal Spezialbaustoffe GmbH shall apply exclusively. We look forward to hearing from you. Please also contact us even if you cannot find the products you are looking for in this brochure.

Collection - joint sealing tapes

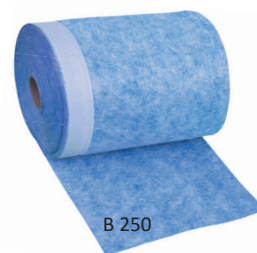
CS 581 Dichtband PVC
sealing tape PVC



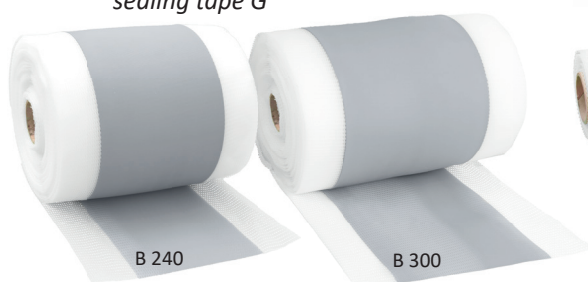
CS 582 Endstückband PVC
end piece tape PVC



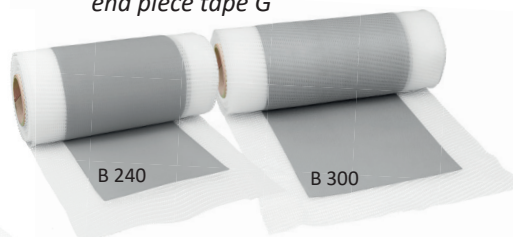
CS 580 Flex-Dichtband SK 30-250
flex sealing tape SK 30-250



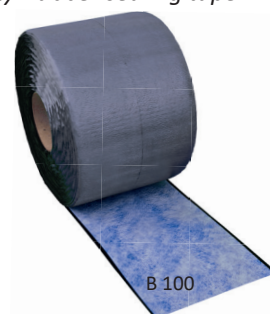
CS 583 Dichtband G
sealing tape G



CS 584 Endstückband G
end piece tape G



CS 589 Butyl-Kautschuk-Dichtband VFB
butyl rubber sealing tape VFB



Professional series: CS 580 Flex-Dichtband flex sealing tape

Elastic universal professional sealing tape with fleece lamination on both sides

- Versatile usable
- Bitumen compatible and alkali compatible
- Permanently elastic and tear-resistant
- High resistance to ageing and weathering
- High resistance to cold and chemicals
- Simple, fast, economical processing
- Impermeable to water
- Very good adhesion to the surface waterproofing
- Can be used for waterproofing with PMBC, flexible MDS, FPD and liquid plastics



Item No.	Article variants	Width
1580150	CS 580 Flex-Dichtband B120	120 mm
1580250	CS 580 Flex-Dichtband B250	250 mm
1580350	CS 580 Flex-Dichtband B300	300 mm
1580550	CS 580 Flex-Dichtband B500	500 mm
1580725	CS 580 Flex-Dichtband SK 30-250	250 mm
1580800	CS 580 Flex-Dichtband Außenecke 120	120 mm
1580900	CS 580 Flex-Dichtband Innenecke 120	120 mm

CS 580 Flex-Dichtband B120
flex sealing tape (width 120)



CS 580 Flex-Dichtband B300
flex sealing tape (width 300)



The classics

CS 580 Flex-Dichtband B120

flex sealing tape (width 120)

(Sealing tape for inside corners)

The „2nd pair of suspenders“ for the critical area in inside corners in base and basement waterproofing. It is particularly suitable as a sealing tape for inside corners for increased sealing security and can also be combined very well with the prefabricated corners.

CS 580 Flex-Dichtband B300

flex sealing tape (width 300)

The classic for the safe, simple and economical repair of various joints and transitions in accordance with the new waterproofing standard DIN 18533, where a 10 cm wide integration into the surface seal is required on both sides.

CS 580 Flex-Dichtband - Innenecke 120
internal corner 120

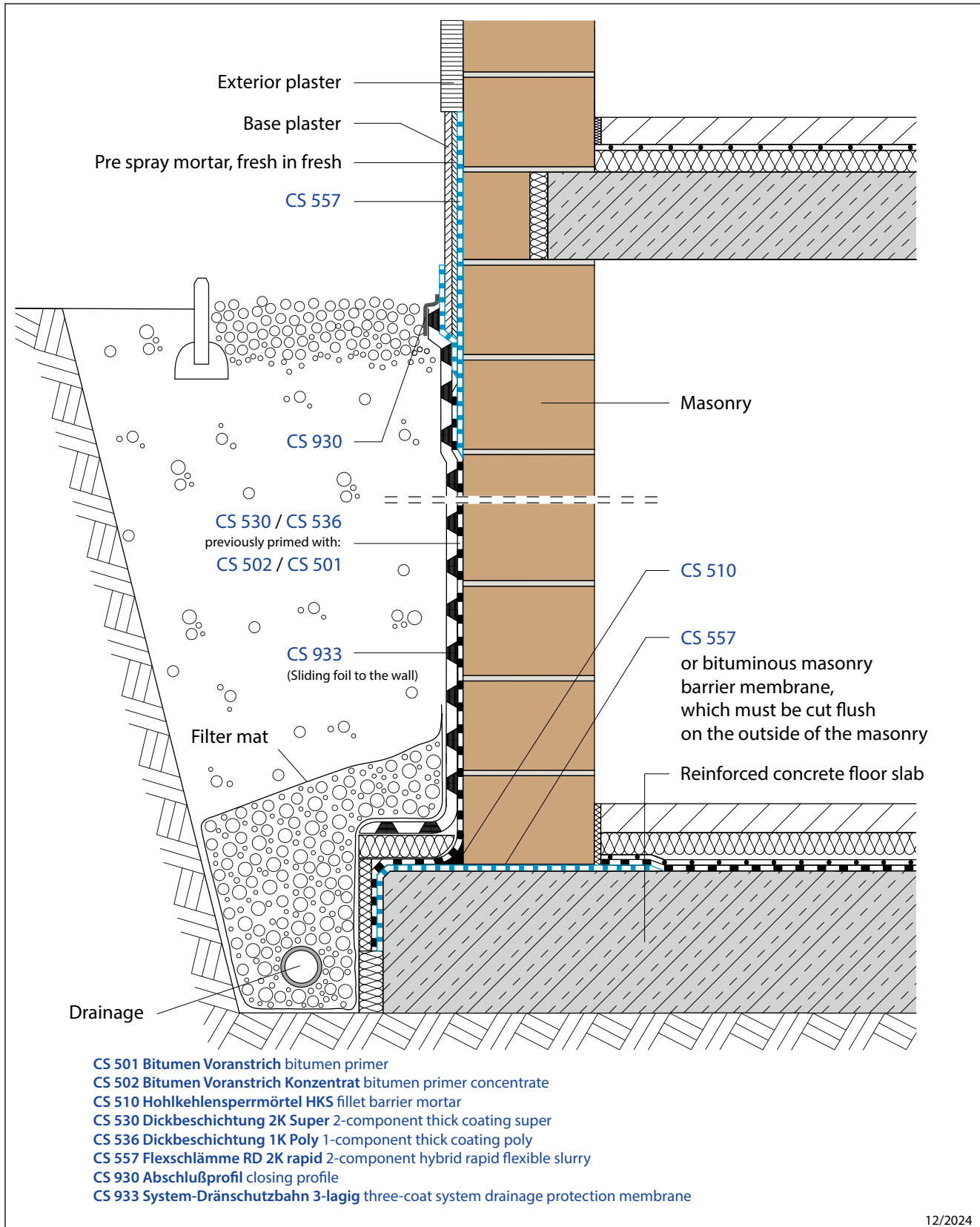


CS 580 Flex-Dichtband - Außenecke 120
external corner 120



Waterproofing application - principle illustration - new constr.

Waterproofing of basement walls on new buildings
with water exposure class W1.2-E

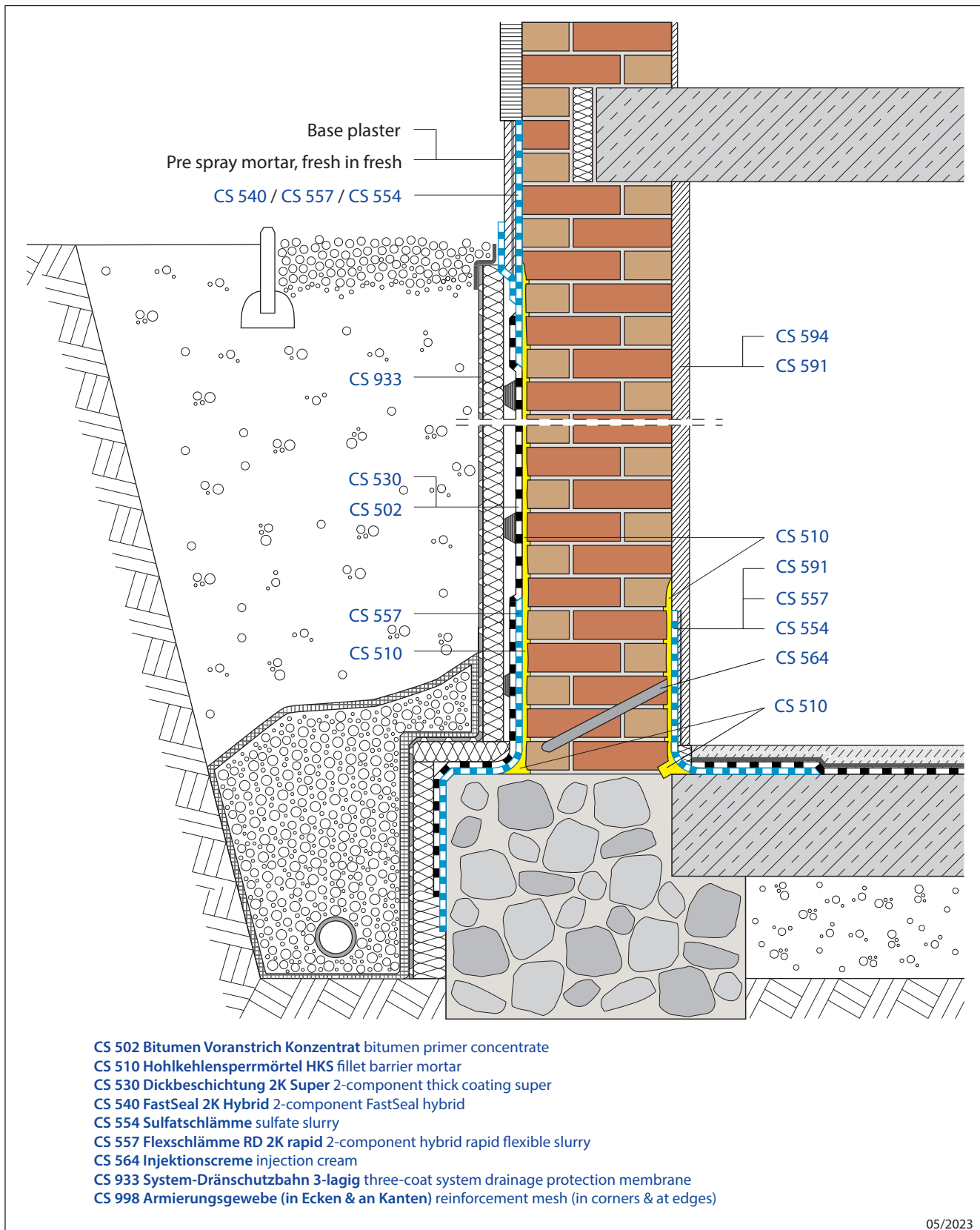


12/2024

Notes: Different or additional solutions may be required due to object-specific conditions! Please always observe the exact specifications and notes of the current technical data sheets as well as the current rules and regulations! This graphic is only a principle representation!

Waterproofing application - principle illustration - renovation

Basement wall renovation with water exposure class W1.2-E - Solution principle 3



Notes: Different or additional solutions may be required due to object-specific conditions! Please always observe the exact specifications and notes of the current technical data sheets as well as the current rules and regulations! This graphic is only a principle representation!

System components for external, internal & cross-section sealing

Equalise, pre-sealing and rounding of corners:

CS 510 Hohlkehlspermmörtel HKS
fillet barrier mortar



Injections for subsequent wall cross-section sealing:

CS 564 Injektionscreme
injection cream



Mineral interior and plinth waterproofing, pre-sealing:

CS 551 Dichtschlämme flexibel 1K
1-component flexible sealing slurry

CS 554 Sulfatschlämme
sulfate slurry

CS 557 Flexschlämme RD 2K rapid
2-component hybrid rapid flexible slurry

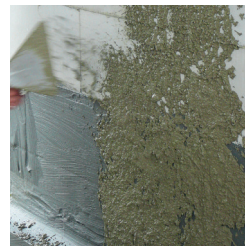
CS 540 FastSeal 2K Hybrid
2-component FastSeal hybrid



Restoration plaster system:

CS 591 Vorspritzmörtel
pre spray mortar

CS 594 Sanierputz weiß
restoration plaster white



PMBC exterior basement waterproofing:

CS 530 Dickbeschichtung 2K Super
2-component thick coating super

CS 536 Dickbeschichtung 1K Poly
1-component thick coating poly



Hybrid waterproofing:

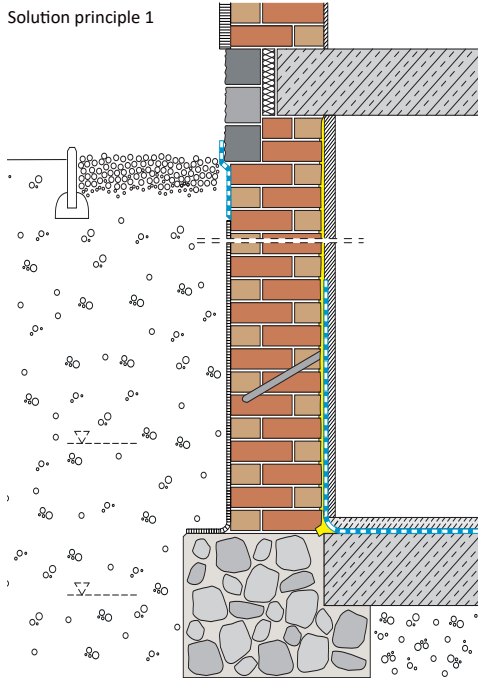
CS 540 FastSeal 2K Hybrid
2-component FastSeal hybrid



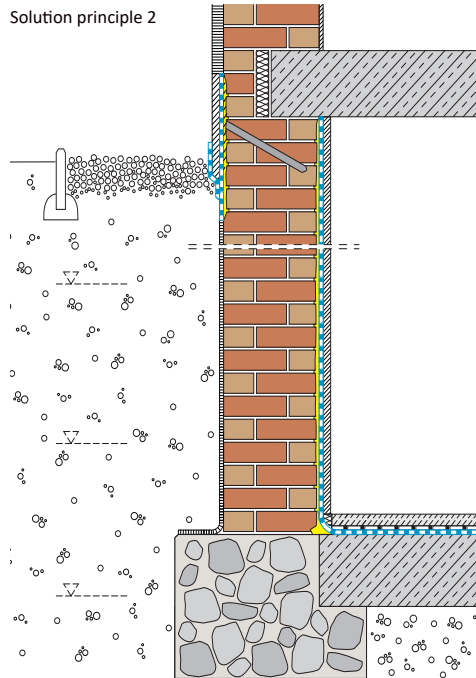
Detailed drawings basement renovation

The solutions for basement renovation always vary greatly from case to case, are specialised and particularly complex. Depending on the local conditions and the findings from the diagnostics, the following system solutions are often used:

Solution principle 1



Solution principle 2



Application against:

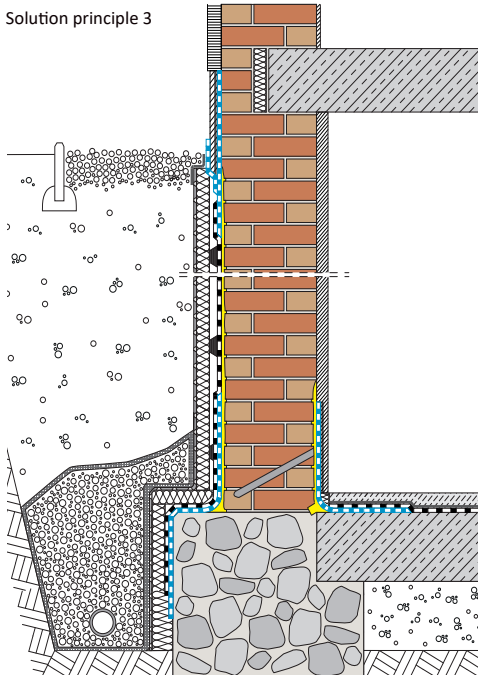
- soil moisture
- adhesive and capillary water
- accumulating seepage water
- pressurised water
- salt pollution damaging to the building

Solution:

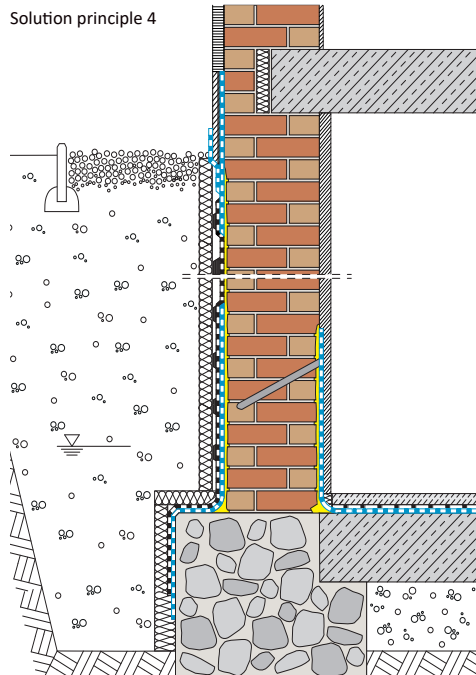
- economical subsequent partial or full-surface internal sealing
- Injection of a subsequent chemical horizontal barrier

The system solution examples for refurbishment shown above enable versatile basement utilisation. The rooms are significantly upgraded and the walls remain capable of absorbing moisture from the building physics despite the internal sealing. These variants are also solutions if, for example, it is not possible to seal the outside.

Solution principle 3



Solution principle 4



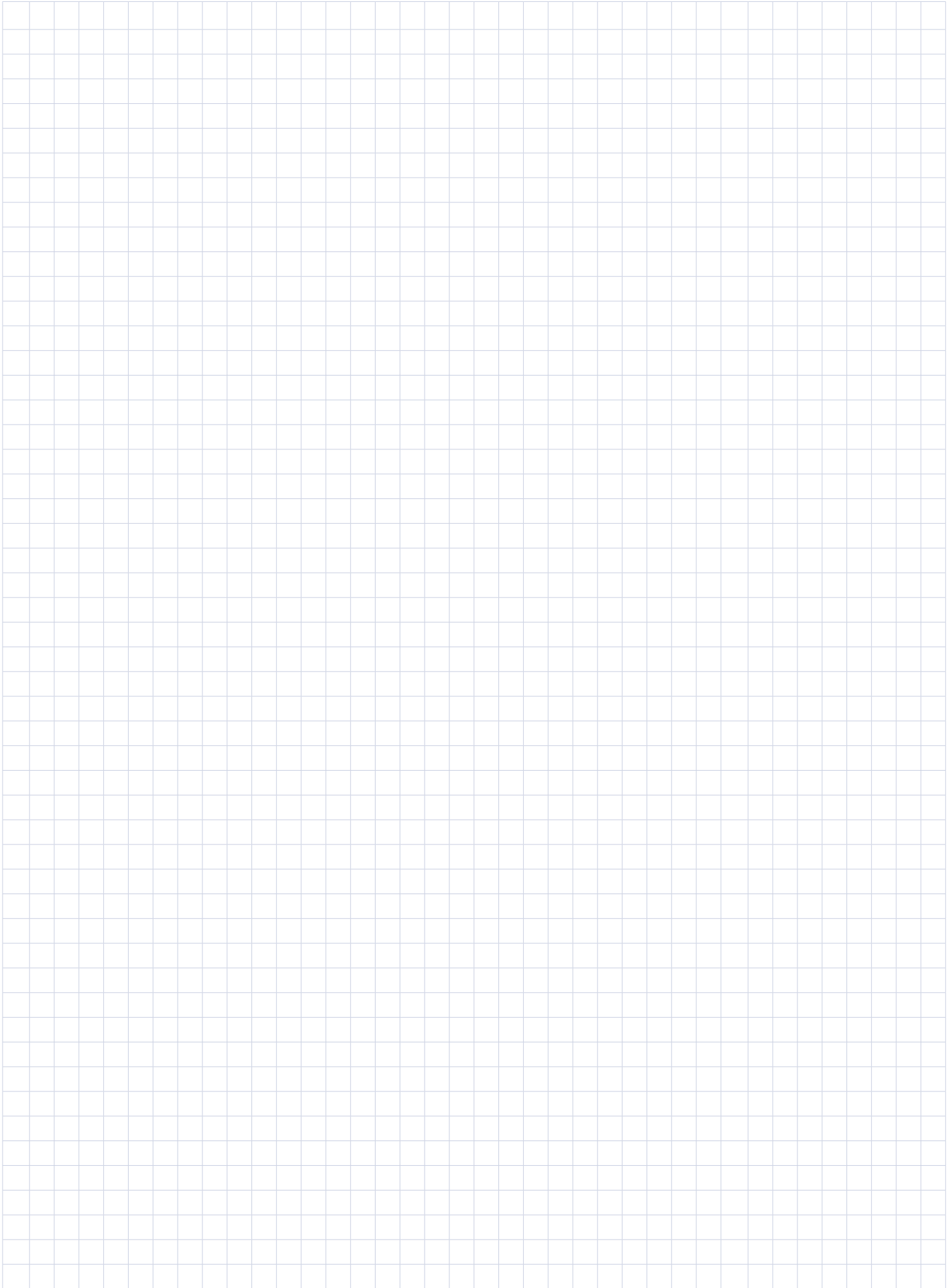
Application against:

- soil moisture
- adhesive and capillary water
- accumulating seepage water
- pressurised water
- salt pollution damaging to the building

Solution:

- external sealing
- partial internal sealing
- Injection of a subsequent chemical horizontal barrier

With the system solution examples shown above, high-quality utilisation of the cellar is also possible with an appropriate floor structure. The transport of dissolved salts through the wall and diffusion is prevented. The walls can therefore become and remain dry, which in turn leads to a dry living climate.



General conditions of sale and delivery

1. General / Scope of application

Our Terms and Conditions of Sale and Delivery shall apply exclusively to all present and future business relations with entrepreneurs (§ 14 BGB [German Civil Code]) as well as legal entities under public law and special funds under public law.

Deviating or supplementary terms and conditions or other restrictions of the buyer shall not be recognised unless ConSeal Spezialbaustoffe GmbH, hereinafter referred to as „ConSeal“, has expressly agreed to them in writing in individual cases.

- 1.1 Verbal agreements require our written confirmation in all cases.
- 1.2 These terms and conditions apply exclusively and to all contracts concluded between the buyer and us for the delivery of goods.
- 1.3 Our terms and conditions expressly do not apply to services such as the laying, installation, use or assembly of building materials or building components.
- 1.4 The Buyer's personal data shall be processed within the scope of the business relationship in compliance with the Federal Data Protection Act and other relevant data protection regulations.
- 1.5 Our products may only be processed by qualified industrial workers.
- 1.6 The information and instructions in the current technical data sheets and processing guidelines, the current relevant regulations and guidelines and the generally accepted rules must always be observed. The purchaser and user of our products is not released from the responsibility of checking the suitability of the products and systems for the intended use and the existing conditions. As the correct and therefore successful application and handling of our products is beyond our control, we cannot guarantee this.
- 1.7 Consultancy contracts and obligations require a special written agreement.

2. Prices / Invoicing / Offers

- 2.1 Our prices are net prices ex works or ex warehouse and include normal packaging plus transport costs and costs for technologically required and requested additional services (e.g. take-away forklift/thermal transport/container packaging etc.)
- 2.2 The agreed prices shall be those set out in the current price list or offer at the time of acceptance of the order, plus the applicable statutory VAT.
- 2.3 Sales or other discounts require our express written confirmation.
- 2.4 ConSeal's offers are not binding, but are to be understood as an invitation to the buyer to submit a purchase offer to ConSeal. The contract is concluded by the buyer's order and acceptance (by delivery or provision of the goods for transport) by ConSeal.
- 2.5 Disposable pallets and non-exchanged reusable pallets (EURO-pallets etc.) shall be invoiced by us. This can also be done subsequently in a separate invoice.

3. Dispatch, transfer of risk

Unless otherwise agreed, delivery is ex works/warehouse. All other charges, logistics costs, taxes, customs duties and costs associated with the contract of sale shall be borne by the buyer.

- 3.1 The risk of destruction, loss or damage to the goods shall pass to the Buyer when the goods are handed over to the carrier or freight forwarder (when loading commences).
- 3.2 Any additional costs incurred as a result of the buyer's separate shipping requests shall be borne by the buyer. ConSeal reserves the right to choose the shipping route and method.

4. Delivery, delay in delivery

The agreed delivery time is only approximate and non-binding - unless we have expressly promised a delivery date in writing.

- 4.1 If agreed delivery dates are exceeded due to circumstances for which we are responsible, the Buyer may withdraw from the contract in writing after a reasonable grace period set by him has expired without result. We shall only be in default after expiry of the aforementioned period of grace.
- 4.2 In the event of force majeure and other unforeseeable circumstances for which we are not responsible, such as interruption of operations due to fire, water, failure of our suppliers to deliver, shortage of energy or raw materials, strike, terror, force majeure, lock-out, traffic disruption, official intervention, we shall be entitled, in the event of delays in delivery or performance, to postpone the delivery or performance for the duration of the hindrance plus a reasonable start-up period.
- 4.3 We shall be entitled to make partial deliveries and partial performances at any time.

5. Terms of payment / Payment transactions

Our invoices are payable without deduction within 30 days of the invoice date, unless expressly agreed otherwise in writing.

- 5.1 If, after conclusion of the contract, we become aware of circumstances which give rise to doubts as to the creditworthiness of the Buyer, or if other circumstances give rise to a deviation from the aforementioned terms of payment, we may, at our discretion and in deviation from the agreed terms of payment, demand payment in advance or the provision of security, set separate terms and/or make all claims arising from the business relationship due for immediate payment.
- 5.2 Payment by bills of exchange and cheques, which we reserve the right to accept, shall only result in the fulfilment of a payment obligation if a permanent payment to us has arisen from bills of exchange and cheques. In the case of acceptance of bills of exchange, the payment of which is to be made abroad or in secondary places, we assume no liability for timely presentation and timely protest. Discount charges shall be calculated from the date on which the invoice amount is due. If the buyer culpably fails to meet his payment obligations, ConSeal shall be entitled to make the entire remaining debt due, even if we have accepted cheques and bills of exchange.
- 5.3 Invoices shall be deemed to have been accepted unless objected to in writing within 8 days of receipt of the invoice, stating the specific objections.

- 5.4 If the buyer is in arrears with a payment, the statutory provisions shall apply. The buyer shall pay interest on our payment claims arising in this context at a rate of 9% above the base rate of the European Central Bank. This rate shall be higher if ConSeal can prove higher damages. We are entitled to this interest from the due date without further reminders. Further claims, in particular due to default on the part of our contractual partner, remain unaffected by this.
- 5.5 The purchaser may only offset counterclaims or assert rights of retention if the purchaser's claims are undisputed or have been recognised by declaratory judgement.

6. Retention of title

The delivered goods shall not become the property of the buyer until the buyer has fulfilled all obligations arising from the business relationship with ConSeal (including all ancillary claims).

- 6.1 The retention of title shall remain in force even if individual claims of ConSeal have been included in a current account and the balance has been struck and accepted. However, the purchaser shall be entitled to dispose of the goods in the ordinary course of business.
- 6.2 If it appears to ConSeal that the realisation of its claims is at risk, the buyer shall, upon request, inform its customers of the assignment and provide ConSeal with all necessary documents and information. Any other disposal, in particular pledging, transfer by way of exchange or transfer by way of security, is not permitted.
- 6.3 The purchaser shall notify us immediately of any seizure of our goods by third parties.
- 6.4 In the event of processing, the retention of title shall extend to the new item. The security of the delivered goods shall also extend to the extended retention of title in the event of resale.

7. Complaints, notices of defects, compensation for damages

ConSeal must be notified in writing of any defects immediately upon receipt of the goods. At the same time, a sample of the rejected goods must be sent.

- 7.1 Goods which are the subject of a complaint may only be returned with the express consent of ConSeal. It is also a prerequisite that 80% of the delivered goods are available for inspection by ConSeal in an unopened condition.
- 7.2 In the case of hidden defects, a written complaint must be made immediately after discovery of the defect, but no later than one month after receipt of the goods. The statute of limitations remains unaffected. The burden of proof that the defect is hidden lies with the Buyer. In the event of a defect, the only remedy available to the purchaser is the replacement of the goods free of charge. Claims for direct or indirect damages are excluded. No claims can be made for processed goods.
- 7.3 The above limitations do not apply to damages resulting from injury to life, body or health. Mandatory statutory liability provisions, such as liability for the assumption of a guarantee or the Product Liability Act, shall remain unaffected. Claims for defects shall be time-barred in the case of § 438 para. 1 No. 3 BGB (German Civil Code), one year after the statutory commencement of the limitation period.
- 7.4 Mandatory statutory provisions on limitation and action, liability under the Product Liability Act and the provisions on the sale of consumer goods shall remain unaffected.

8. Return of goods

Returns are only possible for goods which are not older than 4 weeks from the date of delivery and only with the prior consent of ConSeal. Returns must be made carriage paid and will be reimbursed at a maximum of 65% of the original net value of the goods. It is not permitted to offset open items against returns.

9. Place of fulfilment, place of jurisdiction, applicable law

- 9.1 The place of jurisdiction for all claims between ConSeal and merchants or legal entities under public law or special funds under public law is the local court of Pirna or Dresden. However, we shall also have the right to bring an action against a buyer at the buyer's legal place of jurisdiction.
- 9.2 These Terms and Conditions and the entire legal relationship between the contracting parties shall be governed by the laws of the Federal Republic of Germany to the exclusion of the UN Convention on Contracts for the International Sale of Goods (CISG). The German version of the terms and conditions applies.
- 9.3 Should any of these provisions in these Terms and Conditions be or become invalid or unenforceable, this shall not affect the validity or enforceability of the remaining provisions. In such a case, the contracting parties undertake to replace the ineffective provisions with effective ones that come as close as possible to the ineffective ones in economic terms.



ConSeal Spezialbaustoffe GmbH

Phone +49 35973 295066

Fax +49 35973 295077

profi@conseal.de

www.conseal.de



www.conseal.de